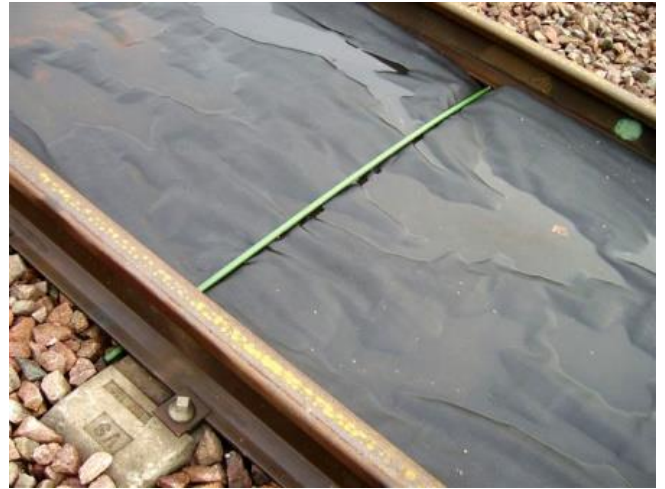


## Product Data Sheet SORB<sup>®XT</sup> Rail Mat

Article	SORB <sup>®XT</sup> RM
Article No.	100611
Dimensions (mm)	25000x1420
Weight	18,20 Kg
Absorption capacity	153,00 L



## Product Information:

### Recommended use

- For use on solid ground surfaces (outside and inside)
- Large-scale protection of soil and factory grounds
- Can be cut according to specific requirements
- Also for preventive measures for longer times
- Absorbs all kinds of oils, fuels, coatings, lubricants and other volatile substances

### Application

- Place the mat below the area, where contaminated substances are likely to spill (for example train tracks, factory sites or under large machinery and trucks)

### After application

- Collect the contaminated mat
- Dispose of following the respective valid laws and local regulations

### Storage

- Store in a dry place with low humidity

### Properties

- Adapted for track beds (width of 1,42m)
- Slip resistance
- PE-foil at bottom side prevents penetration in grounds
- Highly absorbent; can be thermally recycled
- Hydrophobic



Allegro Capital, Logistics,  
Services & More GmbH  
Klosterhofweg 64  
41199 Mönchengladbach

Telefon: +49 2166 1268-160  
Fax: +49 2166 1268-260  
E-Mail: [service@sorb-global.de](mailto:service@sorb-global.de)  
[www.sorb-global.de](http://www.sorb-global.de)

Geschäftsführer: Wolf-Peter Korth  
Steuernummer: 102/5801/1903  
Ust-ID-Nr.: DE308746153  
HRB: 19194



Bankverbindung:  
Commerzbank AG Mönchengladbach  
IBAN: DE82 3104 0015 0162 1028 00  
BIC: COBADEFSXXX